



KILBEGGAN TO MULLINGAR GREENWAY PROJECT PUBLIC CONSULTATION 3 EMERGING PREFERRED ROUTE CORRIDOR

PROJECT DESCRIPTION

Westmeath County Council in conjunction with Transport Infrastructure Ireland (TII) intends to deliver a key strategic greenway from Kilbeggan to Mullingar. This section of greenway will complete a strategic link between the established greenway infrastructure on the Grand Canal Greenway (linking Kilbeggan to Tullamore) and the Old Rail Trail / Royal Canal Greenways (linking Mullingar with Athlone, Dublin, and Longford). This will provide a high-quality greenway, designed to promote cycling, walking and other non-motorised travel.

The greenway project is being delivered in accordance with TII Project Management Guidelines (PMGs). In 2023, Westmeath County Council appointed RPS to deliver Phase 1 through Phase 4 of the TII PMGs. Phase 1 was completed in February 2024 and the project is currently in Phase 2 Options Selection. The output from this Phase 2 is the Emerging Preferred Route Corridor.

PROGRESS TO DATE

In Phase 1 (Concept and Feasibility), the first public consultation for the Kilbeggan to Mullingar Greenway Project was held in May 2023 and displayed the study area for the project. Feedback from the first public consultation helped inform the identification of areas of interest and constraints, which in turn informed the development of route corridor options within which a route for the greenway could be developed.

In Phase 2 (Options Selection), two feasible route corridor options were identified to connect tourism and leisure attractions and use publicly owned land where possible. Both route corridor options start in Kilbeggan Harbour and end in Mullingar with one corridor to the west of Lough Ennell and one corridor to the east of Lough Ennell.

A second public consultation was held in May 2024 where the two route corridor options were displayed. Feedback from the second public consultation helped inform the appraisal process of the route corridor options. The options were assessed under the 6 main Transport Appraisal Framework (TAF) criteria, accessibility, social, land use, safety, climate change and local environment in accordance with Project Appraisal Guidelines (PAG) Unit 13. A Cost Benefit Analysis (CBA) appraisal was also completed.

Following the completion of the Options Selection appraisal an Emerging Preferred Route Corridor (EPRC) has now been identified for the Kilbeggan to Mullingar Greenway. This EPRC starts at Kilbeggan Harbour and includes a section north along the River Brosna to Ballynagore. From here it then continues north to just south of Lough Ennell. At this point the EPRC includes a corridor linking it to Lilliput Adventure Centre. The EPRC then goes eastwards to Dalystown before turning north and continuing to the east of Lough Ennell. The EPRC includes both Carrick Wood and Belvedere House and Gardens. From here it continues north around Lough Ennell to Lynn Road before turning northwest to join the Old Rail Trail to the southwest of Mullingar.

WHAT'S HAPPENING NOW

Westmeath County Council will be conducting Public Consultation No. 3 Emerging Preferred Route Corridor to update all stakeholders, landowners, members of the public and interested parties on the project progress to date and the EPRC within which the Kilbeggan to Mullingar Greenway is likely to be developed.

Information on the EPRC and the public consultation is available through a virtual consultation platform on the project website. Further details are provided overleaf including how to provide feedback.

PUBLIC CONSULTATION EVENT NO. 3

Westmeath County Council want to hear your views on the Emerging Preferred Route Corridor (EPRC) and invite all interested parties to participate in this public consultation.

Consultation period opens on

Monday 16th June 2025.

Closing date for submissions is

Friday 25th July 2025.

An in-person public consultation event will take place at the following time and location:

Bloomfield House Hotel, Mullingar,

Co. Westmeath (N91 HP8E)

Thursday 19th June 2025

from 3pm to 8pm.

VIRTUAL CONSULTATION PLATFORM

On Monday 16th June, we will launch the virtual public consultation platform via the project website:

www.kilbeggantomullingargreenway.ie

On the virtual consultation platform, you can view the information displayed at the public consultation event, make a submission or contact the project team.

VIEWS AND FEEDBACK

Westmeath County Council invites the residents of the local area, members of the public and interested parties to participate in the public consultation on the EPRC for the Kilbeggan to Mullingar Greenway Project. We can be contacted on the following platforms:

- W: www.kilbeggantomullingargreenway.ie
- E: info@kilbeggantomullingargreenway.ie
- Tel: 087 671 3210 (9am to 4:30pm, Monday to Friday).

Project Liaison Officers (PLOs) will be available to meet with landowners by appointment. PLOs are also available to talk on the phone or by online virtual meeting.

We welcome the opportunity to engage with you on the development of this greenway and we look forward to receiving your feedback.

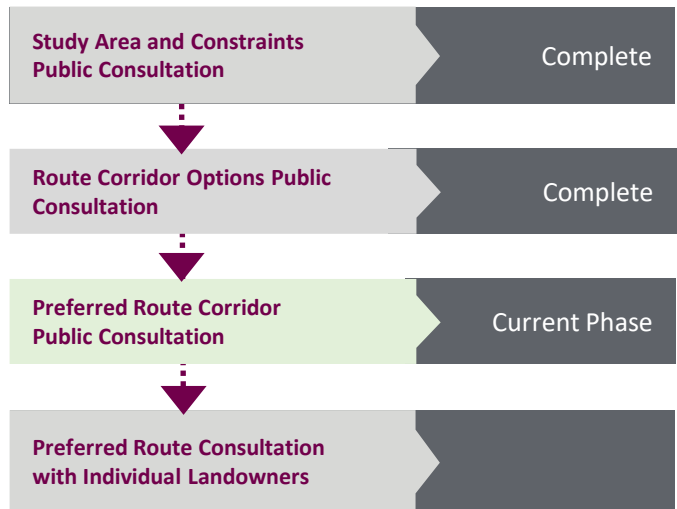


WEBSITE
LINK

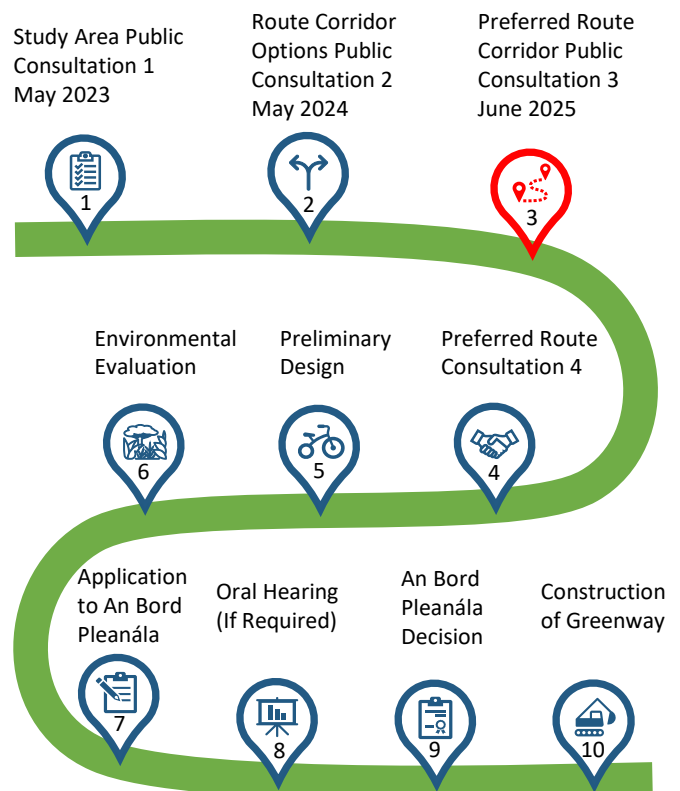


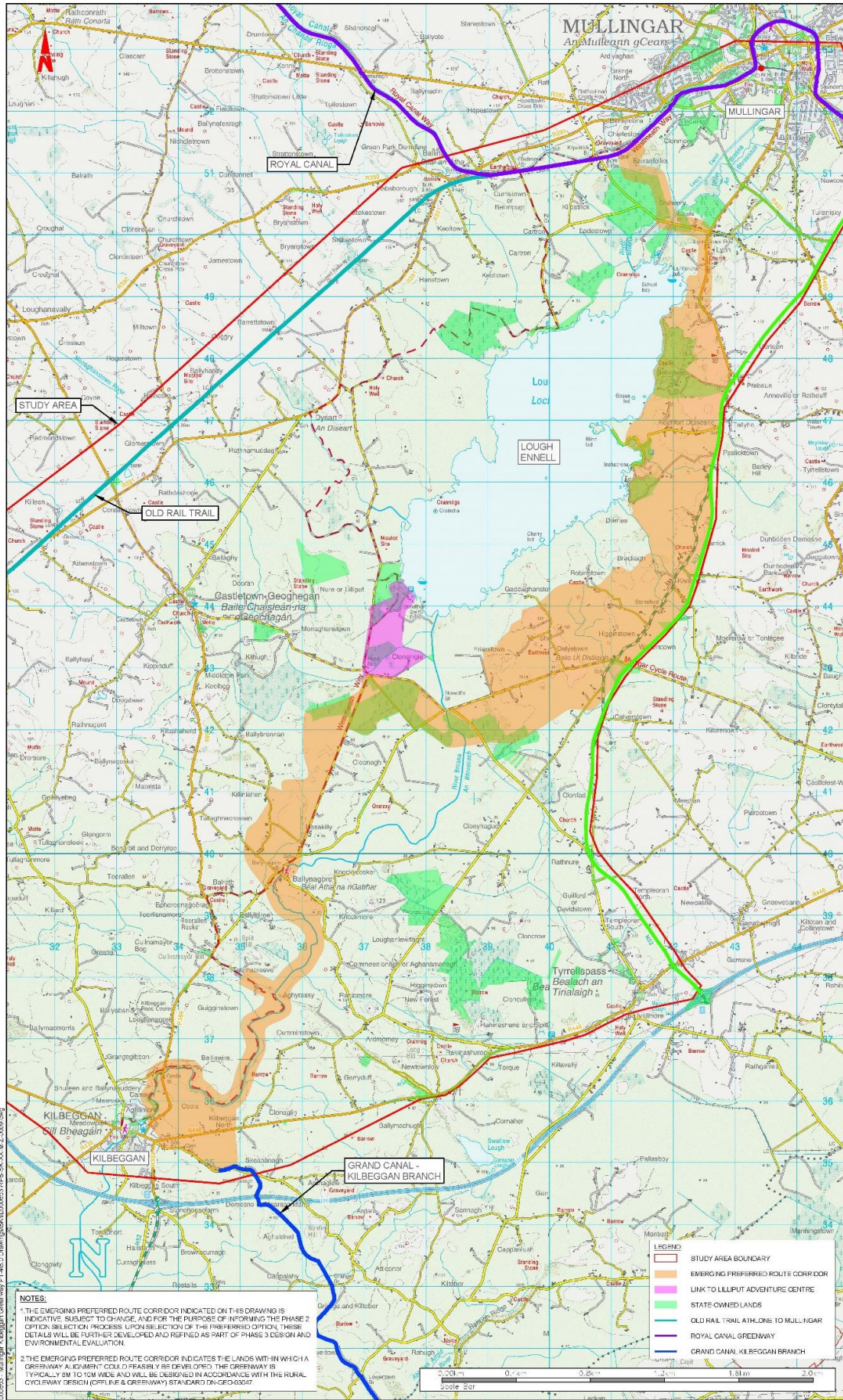
ONLINE
FEEDBACK
FORM

STAGES OF PUBLIC CONSULTATION



STAGES OF THE PROJECT






- General Notes
- (i) Hard copies, dxf and pdf will form a controlled issue of the drawing. All other formats (svg etc.) are deemed to be an uncontrolled issue and any work carried out based on these files is at the respondent's own risk. RPS will not accept any responsibility for any errors from the use of these files, either by human error or by the recipient, listing of the un-dimensioned measurements, compatibility with the respondent's software, and any errors arising when these files are used to aid the respondent's drawing production, or setting out on site.
 - (ii) DO NOT SCALE: use figures/dimensions only.
 - (iii) This drawing is the property of RPS. It is a project confidential/classified document. It must not be copied, used or its contents divulged without prior written consent. The needs and expectations of client and RPS must be considered when working with this drawing.
 - (iv) Information including topographical survey, geotechnical investigation and utility detail used in the design have been provided by others.
 - (v) All Levels refer to Ordnance Survey Datum, Mean Sea Level.

NOTES:

1. THE EMERGING PREFERRED ROUTE CORRIDOR INDICATED ON THIS DRAWING IS INDICATIVE, SUBJECT TO CHANGE, AND FOR THE PURPOSE OF INFORMING THE PHASE 2 OPTION SELECTION PROCESS. UPON SELECTION OF THE PREFERRED OPTION, THESE DETAILS WILL BE FURTHER DEVELOPED AND REFINED AS PART OF PHASE 3 DESIGN AND ENVIRONMENTAL EVALUATION.


2. THE EMERGING PREFERRED ROUTE CORRIDOR INDICATES THE LANDS WITHIN WHICH A GREENWAY ALIGNMENT COULD FEASIBLY BE DEVELOPED. THE GREENWAY IS TYPICALLY 5M TO 10M WIDE AND WILL BE DESIGNED IN ACCORDANCE WITH THE RURAL CYCLOWAY DESIGN (OPTI LINE & GREENWAY STANDARD DESIGN 2007).

Client



Bonnegar Iompair Eireann
Transport Infrastructure Ireland

Westmeath County Council



Westmeath County Council
Comhairle Contae na Bliainne

Scale

1:30,000 @ A1
1:60,000 @ A3

Created on

MAY 2025

Sheets

Of 01

Project

KILBEGGAN TO MULLINGAR GREENWAY

Title

EMERGING PREFERRED ROUTE CORRIDOR
EPRC OVERVIEW

Rev

Date

Amendment / Issue

App

Model File Identifier

File Identifier

IE000635-RPS-SK-XX-M-Z-009

Drawing No

01

Status

S2

Rev

P01

Questionnaire – Please tell us your views

Please complete the feedback form and return by email or post to:

Email: info@kilbeggantomullingargreenway.ie

Post: RPS, IDA Business & Technology Park, Mervue, Galway, H91 H9CK



ONLINE
FEEDBACK
FORM

Name	Email
Address:	Telephone No.
	Would you use the greenway?
	Yes <input type="checkbox"/> No <input type="checkbox"/>
	Do you live or own property within or adjacent to the Emerging Preferred Route Corridor?
Eircode:	Yes <input type="checkbox"/> No <input type="checkbox"/>

Please tell us your views on the Emerging Preferred Route Corridor and provide any information that you would like the project team to consider. (Please use additional paper and include supporting documents / pictures / maps if you wish).

☐ Please tick here if you would like to be contacted regarding project news and updates.

Data Protection: By providing my details in this feedback form, I consent to the use of my personal data in accordance with Westmeath County Council's Privacy Notice which is available at:

www.westmeathcoco.ie/en/ourservices/yourcouncil/privacy/privacynotice

Submissions must be received by 4 p.m. on Friday 25th July 2025

Thank you for your feedback

